

Public Health Update

JUNE 15, 2023, VOLUME 7, ISSUE 6



Inside This Issue:

- Summer Safety Tips
- County Health Rankings
- The Great Outdoors
- Farmers' Markets 2023
- Summer Food Service Programs for Kids
- Well Badger Resource Center Information

Public Health Clinic Days & Hours:

Tuesday

Park Falls Office
8am - 12pm
1pm - 4:30pm

Wednesday & Thursday

Phillips Office
8am - 12pm
1pm - 4:30pm



SUMMER SAFETY TIPS

The summer is finally here and we are all ready to get outdoors. Before heading out, take a minute to review these helpful tips and stay safe while enjoying the beautiful outdoors of Price County.

Beat the Heat: dhs.wisconsin.gov/climate/heat

- Protect yourself by **avoiding the hottest part of the day**.
- **Stay cool** in air conditioning or by taking a cool shower.
- **Stay hydrated** and avoid alcohol, caffeinated and high-sugar drinks.

Fight the Bite: dhs.wisconsin.gov/tick/bite-prevention

- **Use repellent** on skin and clothing to prevent tick bites.
- **Wear the right outdoor clothing** – long sleeves, pants, and tall socks.
- **Check for ticks** after being outdoors.

Watch the Weather: www.dhs.wisconsin.gov/climate

- **Stay informed** and pay attention to local weather forecasts and alerts.
- Create an **emergency plan** and make a **disaster emergency kit**.

Prevent the Poisoning: foodsafety.gov

- **Clean: Wash hands, Utensils, and Surfaces Often** when preparing foods.
- **Separate – Don't Cross Contaminate.** Separate cooked and raw foods.
- **Cook to the Right Temperature:** Use a food thermometer.
- **Chill: Refrigerate and Freeze Food Properly:** Refrigerate within 2 hours.

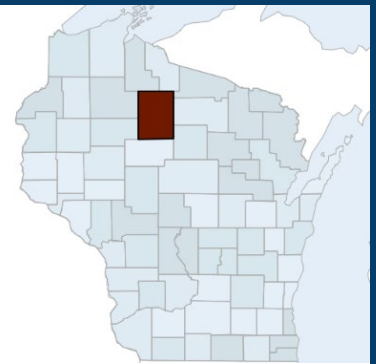
Respect the Rec(reation): dnr.wisconsin.gov

- Wear the **right life jacket:** (dnr.wisconsin.gov)
- **Slow down, ride sober, and wear a helmet** on your ATV/UTV.
- Take a **recreational safety education course** through the DNR.

Price County Public Health wishes you a safe, healthy, and enjoyable summer!

COUNTY HEALTH RANKINGS

The County Health Rankings, published annually in the State of Wisconsin, explore the factors that influence health. These factors can play a role in how well we live and how long we live. The County Health Rankings Model provides an overview of how these factors work together and helps us understand where to take action to eliminate barriers that impact the health of our community. Take a moment to watch this short video clip to learn more about the [Rankings Model](#).

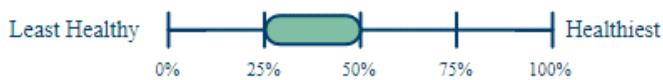


Price County ranked #49 of the 72 Wisconsin Counties.

Here is a further break down of the health outcomes and health factors present in our community:

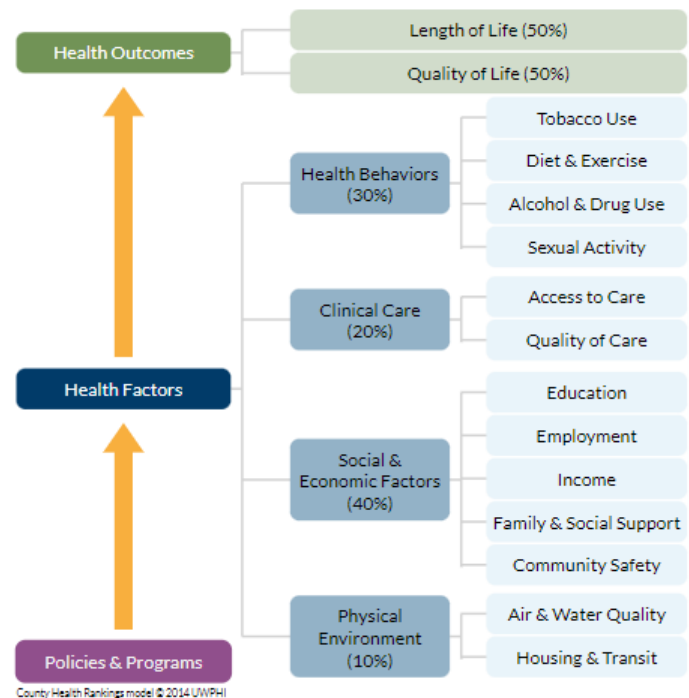
Health Outcomes: how healthy a county is right now, in terms of length of life and quality of life.

Price (PC) is ranked in the lower middle range of counties in Wisconsin (Lower 25%-50%).



Health Factors: represent things we can modify to improve the length and quality of life for residents.

Price (PC) is ranked in the lower middle range of counties in Wisconsin (Lower 25%-50%).



Health Outcomes				(Years of Data Used)
Length of Life	Price County	Wisconsin	United States	
Premature Death	6,200	6,600	7,300	In Price County, 6,200 years of life were lost to deaths of people under age 75, per 100,000 people. (2018-2020)
Quality of Life	Price County	Wisconsin	United States	
Poor or Fair Health	13%	12%	12%	In Price County, 13% of adults reported that they consider themselves in fair or poor health. (2020*)
Poor Physical Health Days	3.4	3.2	3.0	In Price County, adults reported that their physical health was not good on 3.4 of the previous 30 days. (2020*)
Poor Mental Health Days	4.7	4.4	4.4	In Price County, adults reported that their mental health was not good on 4.7 of the previous 30 days. (2020*)
Low Birthweight	7%	8%	8%	In Price County, 7% of babies had low birth weights (under 5 pounds, 8 ounces). (2014-2020)
Additional Health Outcomes	Price County	Wisconsin	United States	(not included in overall ranking)
Life Expectancy	78.9	78.9	78.5	In Price County, the average life expectancy was 78.9 years. (2018-2020)
Premature Age-Adjusted Mortality	310	320	360	In Price County, there were 310 deaths per 100,000 people age 75 or younger. (2018-2020)
Child Mortality		50	50	Data for this measure are not available for Price (PC) County in 2023. (2017-2020)
Infant Mortality		6	6	Data for this measure are not available for Price (PC) County in 2023. (2014-2020)
Frequent Physical Distress	10%	10%	9%	In Price County, 10% of adults reported experiencing poor physical health for 14 or more of the last 30 days. (2020)
Frequent Mental Distress	15%	13%	14%	In Price County, 15% of adults reported experiencing poor mental health for 14 or more of the last 30 days. (2020)
Diabetes Prevalence	9%	8%	9%	In Price County, 9% of adults were living with a diagnosis of diabetes. (2020)
HIV Prevalence		134	380	Data for this measure are not available for Price (PC) County in 2023.. (2020)

Health Factors are continued on the next page.

You may also visit the County Health Rankings [website](#) for further information on these results.

Health Factors

(Years of Data Used)

Health Behaviors	Price County	Wisconsin	United States	
Adult Smoking	20%	16%	16%	In Price County, 20% of adults are current cigarette smokers. (2020)
Adult Obesity	37%	33%	32%	In Price County, 37% of adults had a BMI of 30 or greater. (2020)
Food Environment Index	8.2	8.8	7.0	Price County, scored 8.2 out of a possible 10 on the food environment index, which includes access to healthy foods and food insecurity. The average value across the country was 7.0. (2019 & 2020)
Physical Inactivity	21%	20%	22%	In Price County, 21% of adults reported participating in no physical activity outside of work. (2020)
Access to Exercise Opportunities	65%	84%	84%	In Price County, % of people lived close to a park or recreation facility. (2022 & 2020)
Excessive Drinking	26%	26%	19%	In Price County, 26% of adults reported binge or heavy drinking. (2020)
Alcohol-impaired Driving Deaths	43%	36%	27%	In Price County, 43% of motor vehicle crash deaths involved alcohol. (2016-2020)
Sexually Transmitted Infections	209.7	456.2	481.3	In Price County, 209.7 new cases of chlamydia were diagnosed per 100,000 people. (2020)
Teen Births	16	14	19	In Price County, there were 16 teen births per 1,000 females ages 15-19. (2014 – 2020)
Additional Health Behaviors	Price County	Wisconsin	United States	(not included in overall ranking)
Food Insecurity	10%	7%	12%	In Price County, 10% of people did not have a reliable source of food. (2020)
Limited Access to Healthy Foods	5%	5%	6%	In Price County, 5% of people had low incomes and did not live close to a grocery store, limiting their ability to access healthy foods. (2019)
Drug Overdose Deaths		22	23	Data for this measure are not available for Price (PC) County, Wisconsin in 2023. (2018-2020)
Insufficient Sleep	34%	31%	33%	In Price County 34% of adults reported getting fewer than 7 hours of sleep per night on average. (2020)
Clinical Care	Price County	Wisconsin	United States	
Uninsured	7%	7%	10%	In Price County, 7% of people under the age of 65 did not have health insurance. (2020)
Primary Care Physicians	13,250:1	1,240:1	1,310:1	There was one primary care physician per 13,250 people in Price County, Wisconsin. (2020)
Dentists	940:1	1,380:1	1,380:1	There was one dentist per 940 people registered in Price County, Wisconsin. (2021)
Mental Health Providers	1,410:1	420:1	340:1	There was one mental health provider per 1,410 people registered in Price County, Wisconsin. (2022)
Preventable Hospital Stays	2,790	2,559	2,809	In Price County, 2,790 hospital stays per 100,000 people enrolled in Medicare might have been prevented by outpatient treatment. (2020)
Mammography Screening	48%	43%	37%	In Price County, 48% of female Medicare enrollees received an annual mammography screening. (2020)
Flu Vaccinations	37%	56%	51%	In Price County, 37% of Medicare enrollees received an annual flu vaccine. (2020)
Additional Clinical Care	Price County	Wisconsin	United States	(not included in overall ranking)
Uninsured Adults	7%	8%	12%	In Price County, 7% of adults under age 65 did not have health insurance. (2020)
Uninsured Children	5%	4%	5%	In Price County, 5% of children under age 19 did not have health insurance. (2020)
Other Primary Care Providers	1,000:1	720:1	810:1	There was one primary care provider other than a physician per 1,000 people registered in Price County. This includes nurse practitioners (NPs), physician assistants (PAs), and clinical nurse specialists who can provide routine and preventative care. (2022)
Social & Economic Factors	Price County	Wisconsin	United States	
High School Completion	92%	93%	89%	In Price County, 92% of adults (age 25 or older) had a high school degree or equivalent, such as a GED. (2017-2021)
Some College	64%	70%	67%	In Price County, 64% of adults (age 25-44) had completed some post-secondary education, including vocational/technical schools, junior colleges, or four-year colleges. This includes those who had and had not attained degrees. (2017-2021)
Unemployment	4.2%	3.8%	5.4%	In Price County, 4.2% of people age 16 and older were unemployed but seeking work. (2021)
Children in Poverty	21%	14%	17%	In Price County, 21% of children lived in poverty. (2021)
Income Inequality	3.8	4.2	4.9	In Price County, households with higher incomes had income 3.8 times that of households with lower incomes. (2017-2021)
Children in Single-Parent Household	20%	23%	25%	In Price County, 20% of children lived in a household headed by a single parent. (2017-2021)
Social Associations	15.9	11.2	9.1	In Price County, there were 15.9 membership organizations per 10,000 people. These include civic, political, religious, sports and professional organizations. (2020)
Injury Deaths	106	89	76	In Price County, there were 106 deaths due to injury such as homicides, suicides, motor vehicle crashes and poisonings, per 100,000 people. (2016-2020)
Additional Social Economic Factors	Price County	Wisconsin	United States	(not included in overall ranking)
High School Graduation	96%	90%	87%	In Price County, 96% of high-schoolers graduated in four years. (2019-2020)
Disconnected Youth		5%	7%	Data for this measure are not available for Price (PC) County in 2023. (2017-2021)
Reading Scores	3.0	3.0	3.1	In Price County, third grade students scored, on average, 3.0 on a standardized test for English language arts. A score of 3.0 indicates students performed at grade-level. (2018)
Math Scores	3.0	3.0	3.0	In Price County, third grade students scored, on average, 3.0 on a standardized test for math. A score of 3.0 indicates students performed at grade-level. (2018)
School Segregation	0.06	0.27	0.25	Price County, had a school segregation index of 0.06. This index can range from 0 to 1, with lower values representing a school composition that more closely reflects the distribution of race and ethnicity in the community. (2021-2022)
School Funding Adequacy	\$401	\$2,260	\$1,062	In Price County, on average, per-pupil spending among school districts was \$401 above the estimated amount needed to support students in achieving average US test scores. (2020)
Gender Pay Gap	0.74	0.80	0.81	In Price County, women earned an average of \$0.74 for every \$1.00 men earned in annual income. (2019-2021)
Median Household Income	\$56,200	\$67,200	\$69,700	In Price County, the median household income was \$56,200. Half of all households had an annual income below this amount, and half had annual incomes above it. (2021)
Living Wage	\$39.93	\$46.29	\$45.00	In Price County, workers would need an hourly wage of \$39.93 to cover basic household expenses for a household of one adult and two children. (2022)
Children Eligible for Free or Reduced Price Lunch	49%	43%	53%	In Price County, 49% of children in public schools were eligible for free or reduced price lunch. (2020-2021)
Residential Segregation – Black/White		77	63	Data for this measure are not available for Price (PC) County in 2023. (2017-2021)
Child Care Cost Burden	25%	28%	27%	In Price County, the average household spent 25% of its income on child care for two children. (2021 & 2022)
Child Care Centers	9	6	7	In Price County, there were 9 child care centers per 1,000 children under age 5. (2010-2022)
Homicides		4	6	Data for this measure are not available for Price (PC) County in 2023. (2014-2020)
Suicides	21	15	14	In Price County, there were 21 deaths by suicide per 100,000 people. (2016-2020)
Firearm Fatalities	15	11	12	In Price County, there were 15 firearm-related deaths per 100,000 people. (2016-2020)
Motor Vehicle Crash Deaths	15	10	12	In Price County, there were 15 deaths from motor vehicle crashes per 100,000 people. (2014-2020)
Juvenile Arrests	20		24	In Price County, there were 20 juvenile delinquency court cases per 1,000 youths. (2019)
Voter Turnout	78.1%	75.1%	67.9%	In Price County, 78.1% of the citizen population who were 18 years old or older voted in the 2020 U.S. Presidential Election. (2016-2020)
Census Participation	49.5%		65.2%	In Price County, 49.5% of households self-responded to the 2020 census (by internet, paper questionnaire or telephone). Self-responding refers to submitting census information for their own household, not through a household interview, information filled from a federal administrative record, or a proxy interview with a landlord/neighbor. (2020)
Physical Environment	Price County	Wisconsin	United States	
Air Pollution – Particulate Matter	6.2	7.8	7.4	In Price County, an annual average of 6.2 micrograms per cubic meter of fine particulate matter was measured in the air. The Environmental Protection Agency (EPA) has primary annual average standards of 12.0 micrograms per cubic meter. (2019)
Drinking Water Violations	No			No community water system in Price County reported a health-based drinking water violation.
Severe Housing Problems	14%	13%	17%	In Price County, 14% of households experienced at least one of the following housing problems: overcrowding, high housing costs, lack of kitchen facilities or lack of plumbing facilities. (2015-2019)
Driving Alone to Work	81%	78%	73%	In Price County, 81% of the workforce drives alone to work. (2017-2021)
Long Commute – Driving Alone	24%	28%	37%	In Price County, 24% of workers who drive alone to work commute more than 30 minutes each way. (2017-2021)
Additional Physical Environment	Price County	Wisconsin	United States	(not included in overall ranking)
Traffic Volume	46	527	505	In Price County, traffic volume on major roadways averaged 46 vehicles per meter per day. (2019)
Homeownership	79%	67%	65%	In Price County, 79% of housing units were owner-occupied. (2017-2021)
Severe Housing Cost Burden	10%	11%	14%	In Price County, 10% of households spent half or more of their income on housing. (2017-2021)
Broadband Access	78%	86%	87%	In Price County, 78% of households had a broadband internet connection. (2017-2021)

Check out the County Health Rankings [website](#) for further information on these results.

The Great Outdoors

June is Great Outdoors Month! Enjoy the start of summer by getting outside to walk, swim, bike, or play your favorite activity. Price County has many parks, lakes, rivers and trails so there is something for everyone to explore. When heading out, remember the safety tips offered on page one to ensure a safe and enjoyable adventure!

Follow the [Price County Health and Wellness Coalition Facebook Page](#) to stay updated on local activities for you and your family. The Physical Activity Resource Guide includes many outdoor and indoor activity options in our area. [Click here](#) for a printable version of this Resource Guide. Have fun!



FARMERS' MARKETS 2023

Phillips Farmers' Market
Accepts EBT/Quest
Corner of Avon and Maple Street
(across from Pick n Save)
June 16 – September 30
Saturdays: 9:00AM-12:00PM
Tuesdays: 2:00PM-5:30PM
Facebook: [Phillips Farmers' Market](#)

Park Falls Farmers' Market
Accepts EBT/Quest
Christ the Servant Church
Parking Lot on Highway 13
May 24 – October 15
Wednesdays: 2:00PM-5:30PM
Facebook: [Park Falls Farmers' Market](#)

Harmony Community Garden
W9693 Liberty Lane
Catawba
June 1 – August 1
Based on availability

Summer Food Service Programs for Kids



Chequamegon School

- 6/4/23 - 6/22/23
- Breakfast 7:30am-8:00am
- Lunch 11:30am-12:00pm



Phillips School

- 6/4/23 - 6/21/23
- Breakfast 7:45am-8:30am
- Lunch 11:30am-12:30pm



Prentice School

- 6/4/23 - 6/22/23
- Breakfast 8:00am-8:30am
- Lunch 11:30am-12:30pm

Contact your school district for further information.



Well Badger Resource Center is your one-stop connection to community, social, health, and government programs – a place to find what you need, when you need it.

Call: 1-800-642-7837 | Text: 608-360-9328
Email: help@wellbadger.org | Live Chat: www.wellbadger.org
Facebook Messenger: @wellbadger

PUBLIC HEALTH MAIN OFFICE

104S. Eyder Avenue
Phillips, WI 54555
715-339-3054

PARK FALLS OFFICE

698 4th Avenue South
Park Falls, WI 54552
715-762-3125

MAILING ADDRESS

P.O. Box 88
Phillips, WI 54555

FAX NUMBER
715-339-4018

WEBSITE
www.co.price.wi.us