

Public Health Update

April 14, 2023, VOLUME 7, ISSUE 4



Inside This Issue:

- Welcome Spring & Spring Reminders
- April is Alcohol Awareness Month
- Drug Take Back Day
- Public Health to offer Tdap, HPV, & Meningococcal Vaccines in School
- Adults Need Vaccines Too
- Nutrition Z to A
- COVID-19 Update

WELCOME SPRING!

The temperatures are rising, the snow is melting, and the birds are chirping here in Northern Wisconsin! As we welcome the signs of Spring, we encourage everyone to add a few important reminders to their “Spring To-Do List” to keep their families and pets safe this season.

✓ **Rain showers and melting snow can bring flooding.**

Remember to stay out of flooded water and obey road closure signs.

More information can be found on the [WI DHS Website](#).

✓ **If your well met any flood water, it's time to have it tested.**

Water Test Kits can be purchased through the UW-Extension Office at the Price County Normal Building. Price County Public Health also offers fee exempt water test kits for those who qualify.

More information can be found on the [WI DNR Website](#).

✓ **Stay weather aware!**

April 17-21, 2023 is Tornado and Severe Weather Awareness Week in Wisconsin. It's a great time to review your emergency plans in the event severe weather strikes.

Visit [Ready Wisconsin](#) for more information.

✓ **Fight the Bite – Prevent tick bites.**

Check out this [short video](#) from the WI Department of Health Services to learn more about preventing tick bites and Lyme Disease.

.....

Public Health Clinic Days & Hours:

Tuesday

Park Falls Office
8am - 12pm
1pm - 4:30pm

Wednesday & Thursday

Phillips Office
8am - 12pm
1pm - 4:30pm

April is Alcohol Awareness Month

Governor Tony Evers has proclaimed April as Alcohol Awareness Month in Wisconsin. According to the WI Department of Health Services, alcohol-related problems are among the top public health issues in the state. Here in Price County, alcohol and substance abuse is identified as a priority area in the 2022-2024 Community Health Assessment and Community Health Improvement Plan (CHIP). View the data below to learn more about the impact alcohol has locally and throughout the state.



Research from the [CDC](#), the [Substance Abuse and Mental Health Data Archive](#) and the [Wisconsin Department of Public Instruction](#).

"Excessive drinking" includes binge drinking and heavy alcohol use (Source: WI DHS Website):

- **Binge drinking**—Drinking so much alcohol at once that there is 0.08% or more alcohol in your blood. For most men, this means drinking five or more standard drinks within a few hours. For most women, this means drinking four or more standard drinks within a few hours.
- **Heavy alcohol use**—Having more than four standard drinks in one day for men or more than three standard drinks in one day for women.

According to the Price County Community Health Assessment Survey:

- 48.51% of survey respondents believe not everyone understands the impact of alcohol misuse on overall health.
- 69.31% of survey respondents believe alcohol misuse is an accepted attitude or belief within families or the community.
- 63.37% of survey respondents believe alcohol is easily available in the community (ie. adults provide alcohol, number of establishments within the community).



Adults reporting binge or heavy drinking.

Price County 26% | WI 26% | US 19%

Source: 2023 County Health Rankings



Driving deaths with alcohol involvement.

Price County 43% | WI 36% | US 27%

Source: 2023 County Health Rankings

The Price County AODA/Mental Health Coalition remains instrumental in facilitating strategies to prevent the misuse and abuse of drugs and alcohol in Price County. But, it takes all of us to make an impact.

- Improve your knowledge. WI DHS provides answers to [Alcohol Frequently Asked Questions](#).
- Look at your own drinking habits.
Here's an alcohol screening tool from the CDC: [Check Your Drinking. Make a Plan to Drink Less.](#)
- Talk to your kids about underage drinking and the dangers of alcohol misuse.
Helpful tips can be found at the WI DHS Website: [Small Talks](#).

Learn more and stay informed through the [Price County AODA/Mental Health Coalition Facebook Page](#).

Drug Take Back Day

April 22, 2023

Protect yourself, your family, and your community by disposing of unused and expired medications properly. Safe collection sites, like the Price County Sheriff's Department and the Park Falls City Police Department, are available year round. [Deterra Drug Deactivation and Disposal Pouches](#), available at Price County Public Health, are also a safe way to destroy unused medications at home.

Public Health to offer Tdap, HPV & Meningococcal Vaccines in School

Price County Public Health will be providing school vaccine clinics in the Chequamegon, Phillips and Prentice Schools this month. Parents and guardians may sign their middle and/or high school student up for the Tdap, HPV, and/or Meningococcal vaccinations by visiting the [Price County Public Health Website](#).

For more information, please check out the links below or contact Price County Public Health at 715-339-3054.

- Phillips School
April 17, 2023
- Prentice School
April 18, 2023
- Chequamegon Schools
April 19, 2023

Tdap	HPV	Meningococcal
<p>Adolescents should receive a single dose of Tdap, preferably at age 11 or 12 years.</p>	<p>HPV vaccine is routinely recommended for adolescents at 11 or 12 years of age to ensure they are protected before they are exposed to the virus.</p>	<p>Adolescents need 2 doses of a meningococcal ACWY vaccine: First dose: 11 or 12 years of age Second dose: 16 years of age</p>
Vaccine Information Statement	Vaccine Information Statement	Vaccine Information Statement

Adults need vaccines too! Are you up to date?

Look up your record with the Wisconsin Immunization Registry (WIR).
www.dhs.wisconsin.gov/immunization/wir.htm

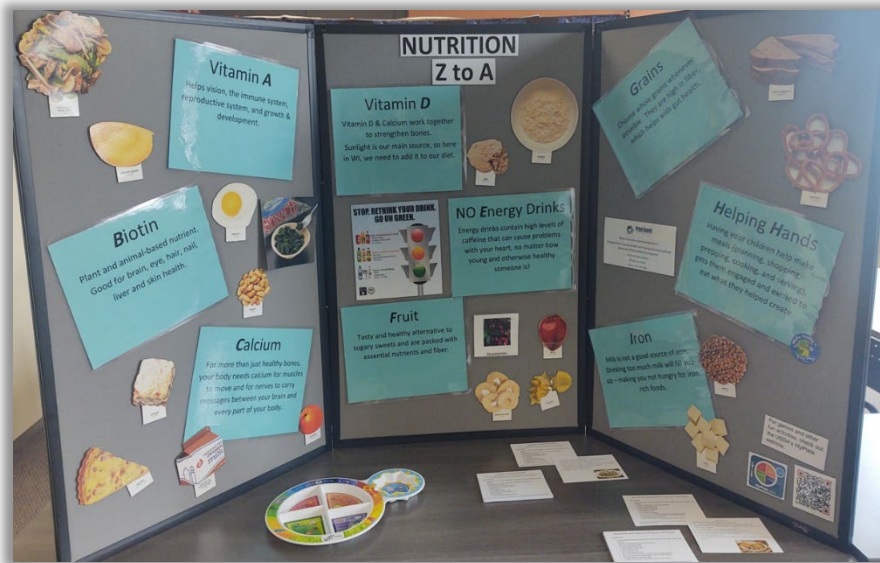
The [Adult Vaccine Assessment Tool](#), available through the Centers of Disease Control, can help you find out which vaccines you may need.

Adult vaccines available at Public Health:

- [Hepatitis A](#) | [Hepatitis B](#) | [Tdap \(tetanus, diphtheria, pertussis\)](#) | [Shingles \(Shingrix\)](#) | [Influenza](#) | [COVID-19](#)

Please contact our office for more information on vaccine cost or to schedule an appointment.
715-339-3054

Nutrition Z to A



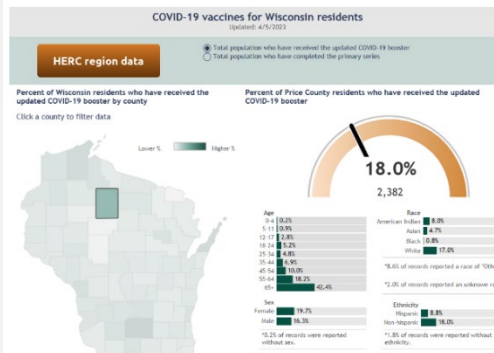
Just because Easter is over doesn't mean the scavenging is over! Be on the lookout at the local libraries in Park Falls, Phillips, and Ogema to learn more about Nutrition Z to A.

Over the next few months, the Health and Wellness Coalition is working on 3 educational boards that will be circulating in the local libraries of Price County providing information to you and your family! Along with the education boards there are recipes that you will be able to take home and try with the whole family! The Health and Wellness Coalition is looking forward to providing education on nutrition that will promote healthy eating within our community!

COVID-19 Update

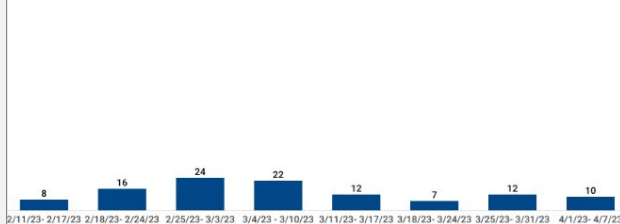
Children 6 months through 4 years of age who completed their three-dose primary series with the monovalent Pfizer vaccine more than two months ago are **now eligible to receive a single booster dose** of the Pfizer bivalent vaccine.

Call Public Health at 715-339-3054 to schedule your COVID vaccination.



PRICE COUNTY COVID-19 SUMMARY STATISTICS

CONFIRMED AND PROBABLE CASES | Previous 8 Weeks



Totals Since 2020



- 1.4%** New Cases | 7-day average of new confirmed and probable cases reported per day.
- 13.3%** Percent Positive by Test | percentages of all positive tests, averaged over the previous 7-day period

7-day average data: 4/1/2023 - 4/7/2023



Free at-home COVID-19 test kits are available at these locations:

- Price County Public Health Offices
- SAY YES! Covid Test [Website](#)
- [COVID.gov Website](#)

PUBLIC HEALTH MAIN OFFICE

104S. Eyder Avenue
Phillips, WI 54555
715-339-3054

PARK FALLS OFFICE

698 4th Avenue South
Park Falls, WI 54552
715-762-3125

MAILING ADDRESS

P.O. Box 88
Phillips, WI 54555

FAX NUMBER

715-339-4018

WEBSITE

www.co.price.wi.us