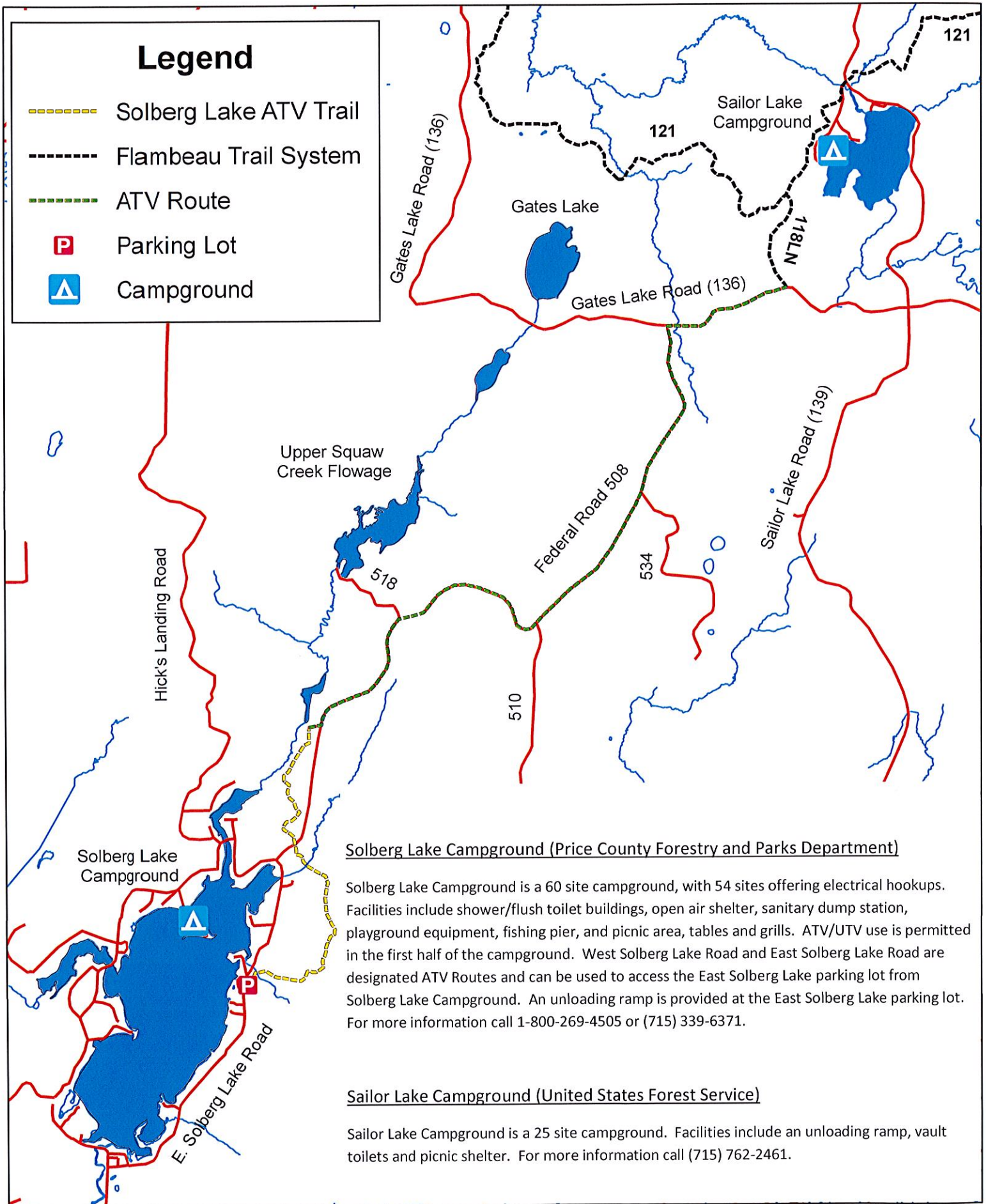


# Solberg Lake to Sailor Lake ATV Trail



## Legend

- - - Solberg Lake ATV Trail
- - - Flambeau Trail System
- - - ATV Route
- P Parking Lot
- ▲ Campground

### Solberg Lake Campground (Price County Forestry and Parks Department)

Solberg Lake Campground is a 60 site campground, with 54 sites offering electrical hookups. Facilities include shower/flush toilet buildings, open air shelter, sanitary dump station, playground equipment, fishing pier, and picnic area, tables and grills. ATV/UTV use is permitted in the first half of the campground. West Solberg Lake Road and East Solberg Lake Road are designated ATV Routes and can be used to access the East Solberg Lake parking lot from Solberg Lake Campground. An unloading ramp is provided at the East Solberg Lake parking lot. For more information call 1-800-269-4505 or (715) 339-6371.

### Sailor Lake Campground (United States Forest Service)

Sailor Lake Campground is a 25 site campground. Facilities include an unloading ramp, vault toilets and picnic shelter. For more information call (715) 762-2461.